



## MANUAL SEALING TONGS

# PAL

These portable lever-operated welding tongs with generator allow containment to be maintained at the end of BAGs or shielded enclosures, and enable nuclear waste to be safely evacuated in leakproof bags, without effort. Lever-operated pressure ensures a constant and regular sealing of the area, resulting in a hermetic seal that prevents leakage or contamination during transport and storage.

lever sealing tong



PAL 1S

THEY TRUST US

framatome



International Atomic Energy Agency

### Uses



Nuclear sector



Laboratory pharmaceutical and biological



Air filtration



- ✓ Lever closure for effortless pressurisation.
- ✓ Control and regulation of the welding temperature of each heating tapes by a system of 2 thermocouples associated with an electronic board.
- ✓ Continuous monitoring of welding parameters defined during the qualification process.
- ✓ Quality and regularity of welds: traceability by memorising welding cycles.
- ✓ Easy to use: all welding steps are submitted to the operator for approval.
- ✓ Multifunction parameter-setting software (time, temperature, pressure...).



1 year warranty<sup>(1)</sup>

<sup>(1)</sup>Except wear parts

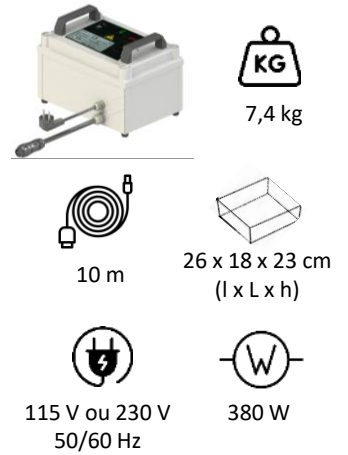


Compliance with CE standards

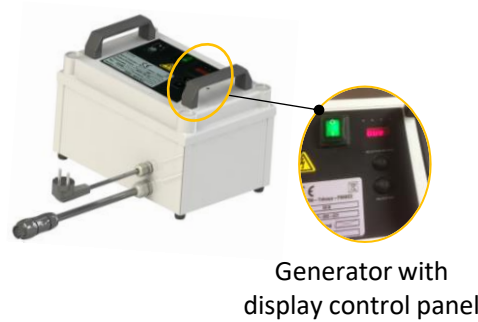
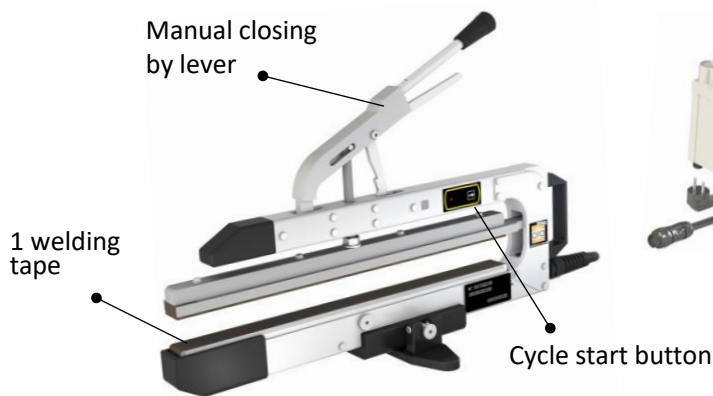
## TECHNICAL DATA

MODELS							
<b>PAL 1S 416</b>	44 x 36 x 5 cm	400 x 16 mm	manual	Ø 250 mm	2,8 kg	4,5 m	380 W
<b>PAL 1S 516</b>	54 x 36 x 5 cm	500 x 16 mm		Ø 300 mm	3,4 kg		

## GENERATOR



## EQUIPMENT



## CONFIGURATION SOFTWARE

- ✓ 2 secure profiles with different user rights.
- ✓ History and traceability by memorising welding cycles.
- ✓ Integration of weld characteristics according to needed parameters: material, thickness...

(more information on page 3)



## TABLE OPTION

Compact work table with 5 wheels swivelling at 360° with brakes.

Not height-adjustable.

(more information in the tables product leaflet).



ref. DESSCHAR

## ZOOM CONTROL PANEL

- 1 to 9 adaptable programs in memory.
- Simple 4-digit messages describing the procedure at each step of the process.



Need more information?

Contact the sales department

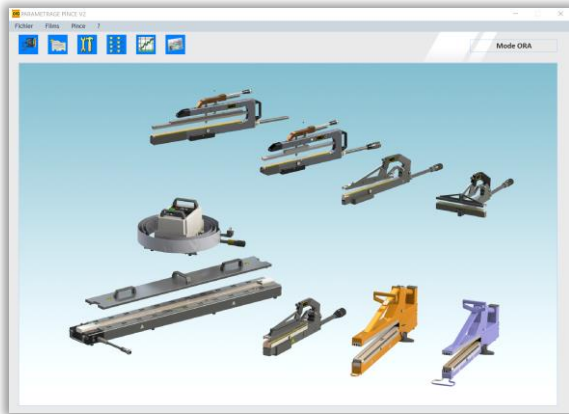


+33 (0)4 74 00 59 54

## ZOOM CONFIGURATION SOFTWARE

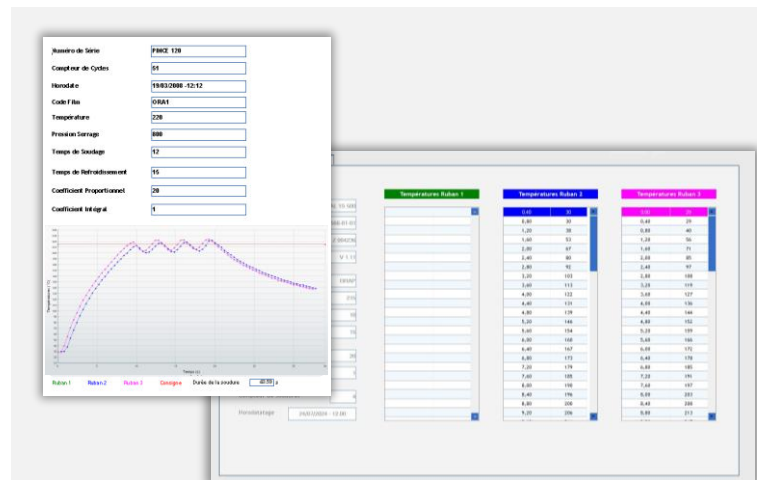
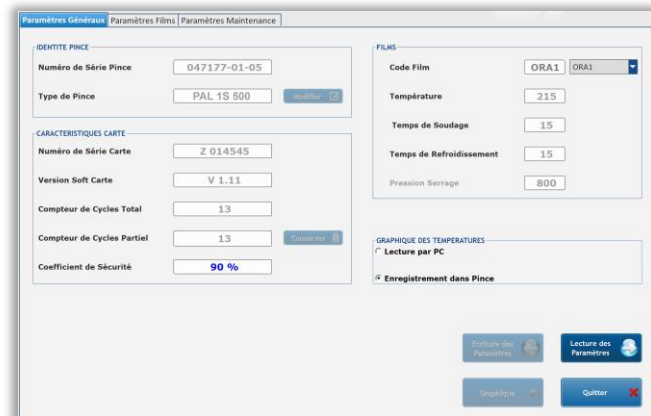
### THE SOFTWARE SUPPLIED WITH THE TONG ENABLES :

- Loading welding parameters.
- A record of the history of welds made with the tong.
- Diagnosis of incidents that may have blocked the welding process.
- The cycle is stopped if one of the parameters differs from that defined during the qualification process: the tong is held in the closed position to ensure that containment is maintained.  
(A warning message appears on the display).



### PARAMETERS :

The *parameters* menu gives all the information relating to the tong, in particular the tong serial number, the cycle counters (total and partial)... and allows the welding parameters to be defined according to the type of film.



For each weld recorded in the history, the software provides details of the temperatures recorded every 300 milliseconds by each thermocouple.

### HISTORY OF WELDING CYCLES AND DEFECTS :

The software allows you to view the last 100 welding cycles with the exact temperature of each welding wire (stored in graphical and tabular form), as well as all the following information:

- Date and time of welding
- Film code
- Pressure
- Welding duration
- Cooling duration
- Counter

Date	Heure	Compteur	Type Pince	Code Film	Température	Pression Serrage	Temps Soudage	Temps Refroidiss.
23/07/2024	14:56	2	PAL 1S 500	ORA1	215	0	10	15
24/07/2024	11:16	3	PAL 1S 500	ORA1	215	0	10	15
24/07/2024	11:26	4	PAL 1S 500	ORA1	215	0	10	15
24/07/2024	11:29	5	PAL 1S 500	ORA1	215	0	10	15
24/07/2024	11:33	3	PAL 1S 500	ORA1	215	0	10	15
24/07/2024	11:30	6	PAL 1S 500	ORA1	215	0	10	15
24/07/2024	11:47	7	PAL 1S 500	ORA1	215	0	10	15
24/07/2024	11:54	8	PAL 1S 500	ORA1	215	0	10	15
24/07/2024	12:00	4	PAL 1S 500	ORA1	215	0	10	15
24/07/2024	13:36	9	PAL 1S 500	ORA1	215	0	10	15
24/07/2024	13:44	10	PAL 1S 500	ORA1	215	0	10	15
24/07/2024	13:51	11	PAL 1S 500	ORA1	215	0	10	15
24/07/2024	13:58	12	PAL 1S 500	ORA1	215	0	10	15
24/07/2024	14:02	13	PAL 1S 500	ORA1	215	0	10	15

Need more information? Contact the sales department: +33 (0)4 74 00 59 54