



MAGNETICS SEALING BARS

BSM

This triband magnetic sealing bar and its generator can be used to make 60 to 240 cm long welds on bags coming out of glove boxes or isolators in a single operation. Its independent counter-bar facilitates the evacuation of large packages, without height constraints. The counter-bar is locked in place by a motor that activates a magnetic pressure system across the entire welding zone, ensuring a hermetic weld on the liner and preventing any leakage or contamination.



BSM 3S

THEY TRUST US



Uses



Nuclear sector



Laboratory pharmaceutical and biological



Air filtration



A welding technology developed in partnership with the AREVA MELOX R&D department and protected by a joint AREVA (ORANO) / ORA patent.



- ✓ Triple welding of long lengths in a single operation.
- ✓ Automatic separation by thermics cutting thanks to the T-shaped central wire.
- ✓ Control and regulation of the welding temperature of each heating strip by a system of thermocouples associated with an electronic board.
- ✓ Continuous monitoring of welding parameters defined during the qualification process.
- ✓ Quality and regularity of welds: traceability by memorising welding cycles.
- ✓ Multifunction parameter-setting software (time, temperature, pressure...).
- ✓ Options: BSM version with remote control unit and/or ATEX (**EX**plusive **AT**mosphère) → Please contact us.



1 year warranty⁽¹⁾

⁽¹⁾Except wear parts



Compliance with CE standards

TECHNICAL DATA

MODELS						
BSM 3S 600	87 x 12 x 16 cm	6 / 3+3 / 6 (mm)	600 mm	bar : 9,8 kg counter bar : 2,5 kg	4,60 m	Ø 360 mm
BSM 3S 700	97 x 12 x 16 cm		700 mm	bar : 10,4 kg counter bar : 2,8 kg		Ø 400 mm
BSM 3S 800	107 x 12 x 16 cm		800 mm	bar : 11 kg counter bar : 3,1 kg		Ø 500 mm barrels 118 L
BSM 3S 1000	129 x 12 x 16 cm		1 000 mm	bar : 12,2 kg counter bar : 3,8 kg		Ø 630 mm barrels 223 L

* Longer weld lengths: up to 2400 mm - Consult us

GENERATOR

12 kg

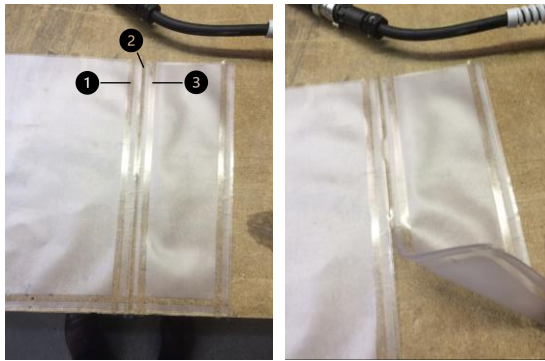
900 W

115 V or 230 V
50/60 Hz

Ø 43 cm

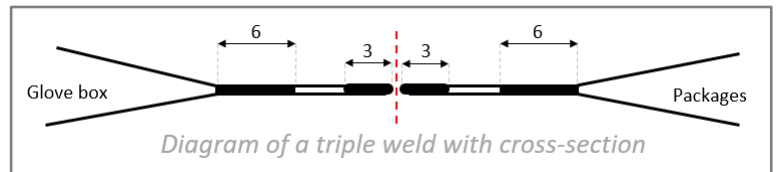
10 m

AUTOMATIC CUTTING

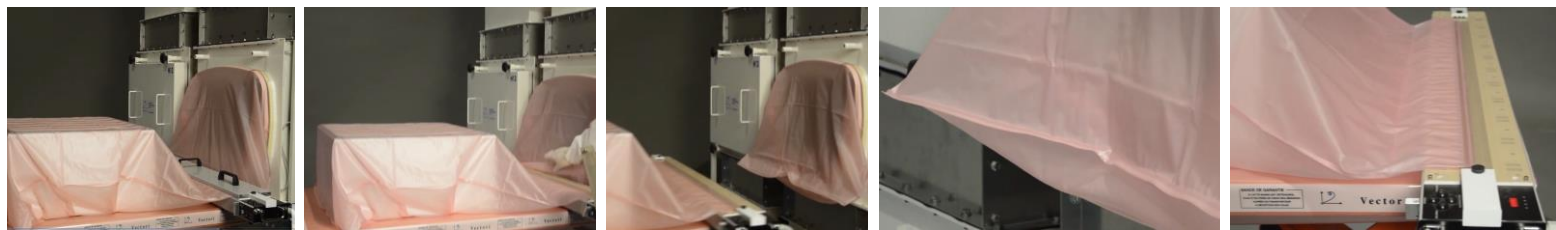


The 3 welds are made during the same cycle.

- A 6 mm weld to close the tunnel sleeve on the containment side (tape 1).
- A 2 x 3 mm weld to separate the package from the isolator or BIBO, with an automatic cut in the middle (tape 2).
- A 6 mm weld to close the bag around the parcel to be evacuated (tape 3).
- Temperatures are measured on each of the tapes throughout the cycle.
- The T-shaped wire only heats up once the 2 outer tapes have done their weldings, so there's no risk of leakage, and the material can be separated manually.



OPERATING PRINCIPLE



Fitting the BSM after evacuating the waste in the tunnel sleeve.

Separation of the two parts of the tunnel sleeve after welding.

Double welds Bag In Bag Out (BIBO) side

Double welds Package side.

CONFIGURATION SOFTWARE

- ✓ 2 secure profiles with different user rights.
- ✓ History and traceability by memorising welding cycles.
- ✓ Integration of weld characteristics according to needed parameters: material, thickness...

(more information on page 4)



Need more information?

Contact the sales department



+33 (0)4 74 00 59 54

TABLES (OPTIONS)

Motorised or manual work tables with wheels, height-adjustable.
(more information in the tables product leaflet).



Motorised table
ref. DESSMOT BSM



Made-to-measure
manual table



WELDING ZOOM

ADVANTAGES OF TRIBAND WELDING



VS



3 welds (BSM bar) :

- Welding lengths from 600 to 2400 mm.
- The possibility of resuming from the other side.
- No risk of burns.

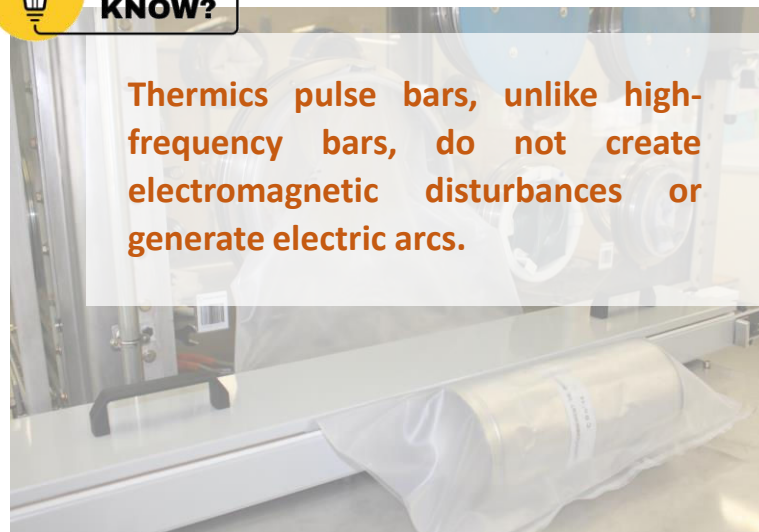
1 single weld (other) :

- Weld too short.
- Alignment problem.
- Loss of containment due to burning of the plastic.



DID YOU KNOW?

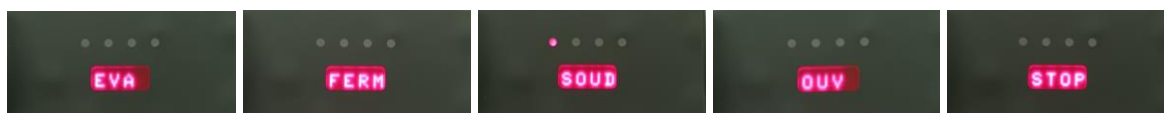
Thermics pulse bars, unlike high-frequency bars, do not create electromagnetic disturbances or generate electric arcs.



ZOOM CONTROL PANEL



- 1 to 9 adaptable programs in memory.
- Simple 4-digit messages describing the procedure at each stage of the process.
- When the bar is locked, the display shows the selected welding program.

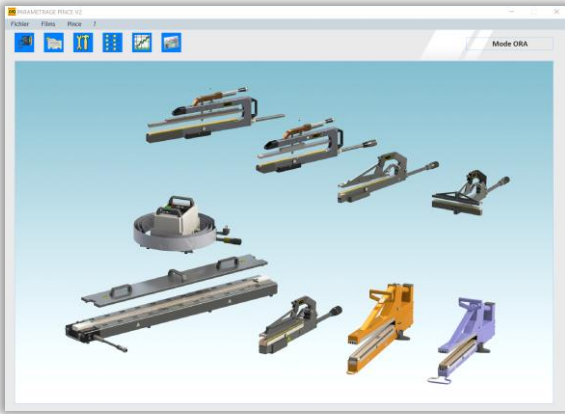




ZOOM CONFIGURATION SOFTWARE

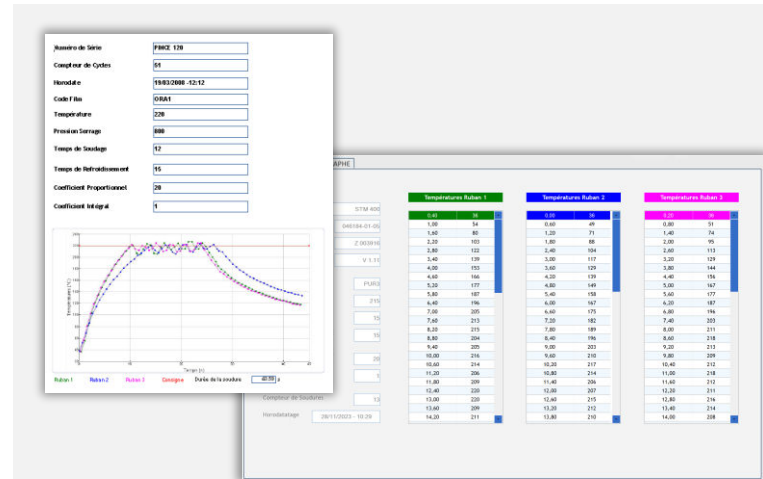
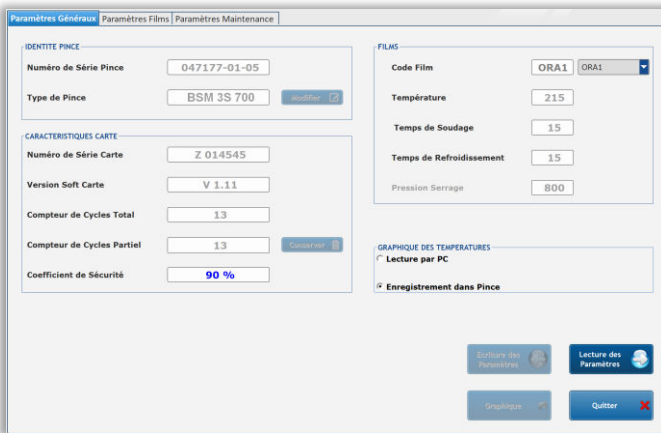
THE SOFTWARE SUPPLIED WITH THE BAR ENABLES :

- Loading welding parameters.
- A record of the history of welds made with the bar.
- Diagnosis of incidents that may have blocked the welding process.
- The cycle is stopped if one of the parameters differs from that defined during the qualification process: the bar is held in the closed position to ensure that containment is maintained. (A warning message appears on the display).



PARAMETERS :

The *parameters* menu gives all the information relating to the bar, in particular the bar serial number, the cycle counters (total and partial)... and allows the welding parameters to be defined according to the type of film.

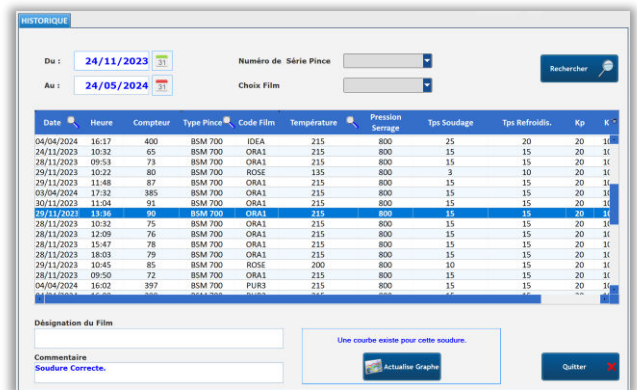


For each weld recorded in the history, the software provides details of the temperatures recorded every 300 milliseconds by each thermocouple.

HISTORY OF WELDING CYCLES AND DEFECTS :

The software allows you to view the last 100 welding cycles with the exact temperature of each welding wire (stored in graphical and tabular form), as well as all the following information:

- Date and time of welding
- Film code
- Pressure
- Welding duration
- Cooling duration
- Counter



Need more information?



Contact the sales department: +33 (0)4 74 00 59 54