



MOTORISED SEALING TONGS

STM

These portable triband welders with generator enable the safe evacuation of nuclear waste in leakproof bags, without effort. They are motorised to ensure a constant and regular pressure throughout the welding zone. The result is a hermetic seal that prevents any leakage or contamination during transport and storage of the packages.



STM 3S 400

STM 3S 500



A welding technology developed in partnership with the AREVA MELOX R&D department and protected by an AREVA (ORANO) patent.

THEY TRUST us



Uses



Nuclear sector



Laboratory pharmaceutical and biological



Air filtration



- ✓ Fast, easy-to-handle tongs: 3 welds simultaneously in around 45 seconds (heating + cooling).
- ✓ Control and regulation of the welding temperature of each heating tapes by a system of thermocouples associated with an electronic board.
- ✓ Continuous monitoring of welding parameters defined during the qualification process.
- ✓ Quality and regularity of welds: traceability by memorising welding cycles.
- ✓ Easy to use: all welding steps are submitted to the operator for approval.
- ✓ Multifunction parameter-setting software (time, temperature, pressure...).



1 year warranty⁽¹⁾

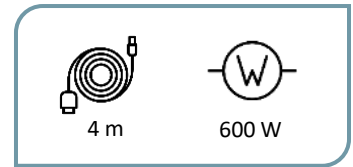
⁽¹⁾Except wear parts



Compliance with CE standards

TECHNICAL DATA

MODELS						
STM 3S 400	70 x 28 x 15 cm	6 / 8 / 6 (mm)	400 mm	manual	Ø 250 mm	4,5 kg
STM 3S 412		6 / 12 / 6 (mm)				
STM 3S 416		6 / 16 / 6 (mm)				
STM 3ST 400		6 / 3+3 / 6 (mm)		automatic		
STM 3S 500	85 x 33 x 18 cm	6 / 8 / 6 (mm)	500 mm	manual	Ø 300 mm	5,5 kg
STM 3S 512		6 / 12 / 6 (mm)				
STM 3S 516		6 / 16 / 6 (mm)				
STM 3ST 500		6 / 3+3 / 6 (mm)		automatic		



GENERATOR

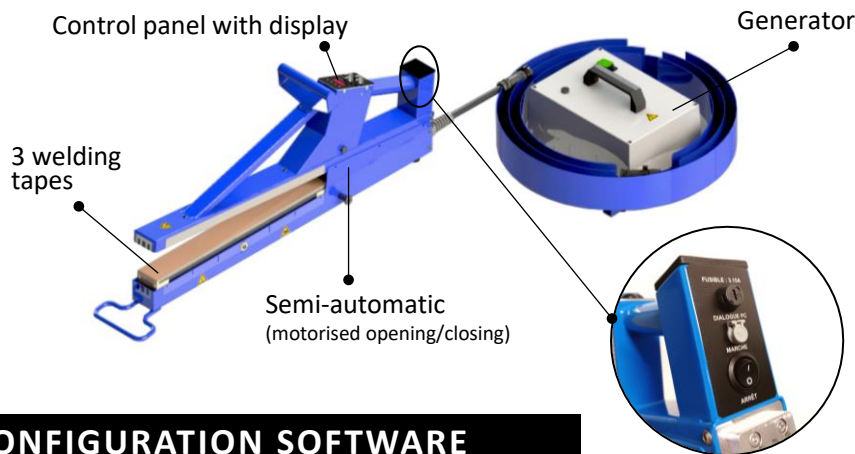


115 V or 230 V
50/60 Hz



600 W

EQUIPMENT



CONFIGURATION SOFTWARE

- ✓ 2 secure profiles with different user rights.
- ✓ History and traceability by memorising welding cycles.
- ✓ Integration of weld characteristics according to needed parameters: material, thickness...

(more information on page 4)



TABLES OPTIONS

Motorised or manual work tables on wheels, height-adjustable.
(more information in the tables product leaflet).



ref. DESSMOT



ref. DESSMANU

Need more information?



Contact the sales department

+33 (0)4 74 00 59 54

WELDING ZOOM



ADVANTAGES OF TRIBAND WELDING



VS



3 welds (STM tong) :

- Welding lengths of 400 or 500 mm.
- The possibility of resuming from the other side.
- No risk of burns.

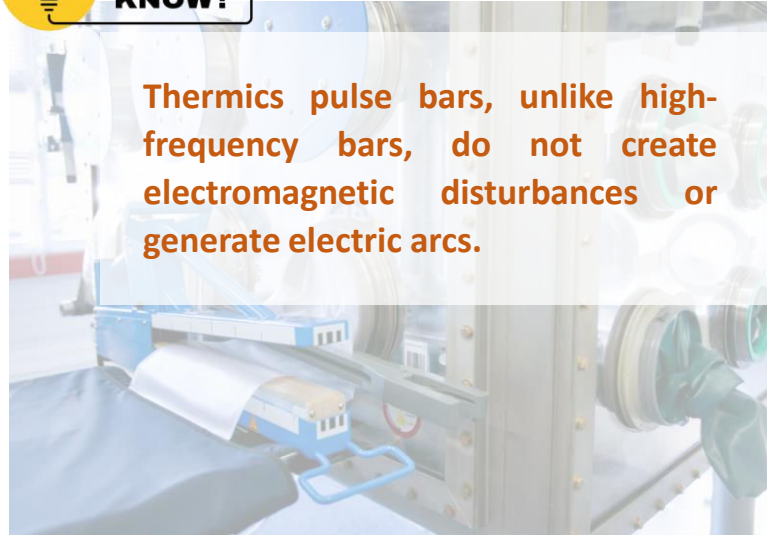
1 single weld (other) :

- Weld too short.
- Alignment problem.
- Loss of containment due to burning of the plastic.

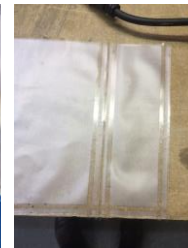
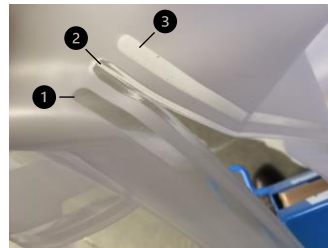


DID YOU KNOW?

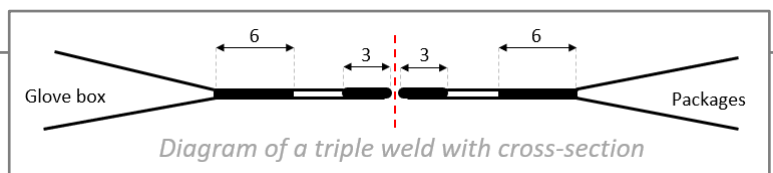
Thermics pulse bars, unlike high-frequency bars, do not create electromagnetic disturbances or generate electric arcs.



AUTO CUTTING BY T-SHAPED WIRE



- A 6 mm weld to close the tunnel sleeve on the containment side (tape 1).
- A 2 x 3 mm weld to separate the package from the isolator or BIBO, with an automatic cut in the middle (tape 2).
- A 6 mm weld to close the bag around the parcel to be evacuated (tape 3).
- Temperatures are measured on each of the tapes throughout the cycle.
- The T-shaped wire only heats up once the 2 outer tapes have done their weldings, so there's no risk of leakage, and the material can be separated manually.



ZOOM CONTROL PANEL

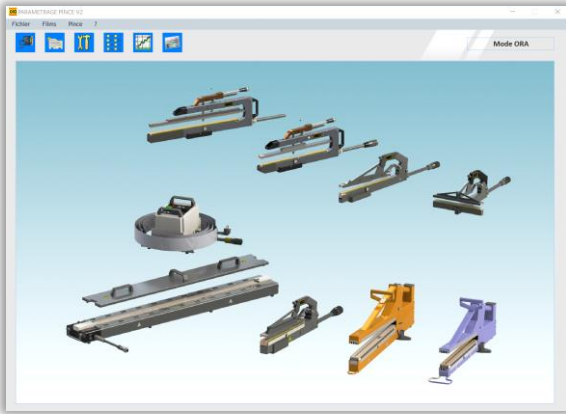


- 1 to 9 adaptable programs in memory.
- Simple 4-digit messages describing the procedure at each stage of the process.
- When the bar is locked, the display shows the selected welding program.





ZOOM CONFIGURATION SOFTWARE



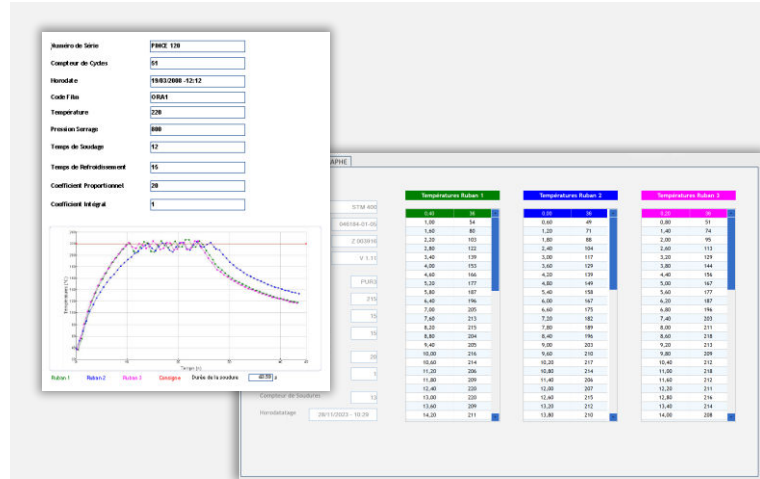
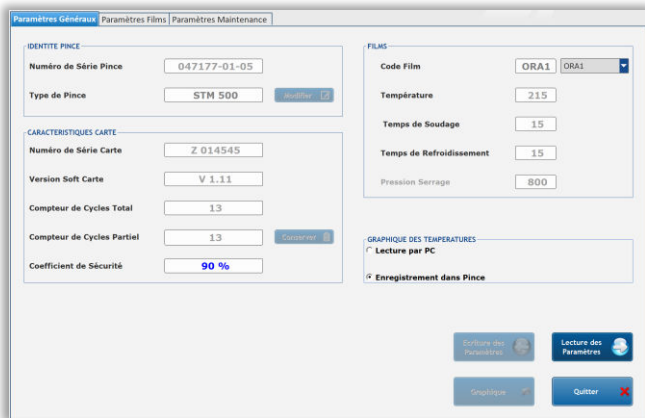
THE SOFTWARE SUPPLIED WITH THE TONG ENABLES :

- Loading welding parameters.
- A record of the history of welds made with the tong.
- Diagnosis of incidents that may have blocked the welding process.
- The cycle is stopped if one of the parameters differs from that defined during the qualification process: the tong is held in the closed position to ensure that containment is maintained. (A warning message appears on the display).



PARAMETERS :

The *parameters* menu gives all the information relating to the tong, in particular the tong serial number, the cycle counters (total and partial)... and allows the welding parameters to be defined according to the type of film.



For each weld recorded in the history, the software provides details of the temperatures recorded every 300 milliseconds by each thermocouple.

HISTORY OF WELDING CYCLES AND DEFECTS :

The software allows you to view the last 100 welding cycles with the exact temperature of each welding wire (stored in graphical and tabular form), as well as all the following information:

- Date and time of welding
- Film code
- Pressure
- Welding duration
- Cooling duration
- Counter

Date	Heure	Compteur	Type Pince	Code Film	Température	Pression Serrage	Tps Soudage	Tps Refroidis.	Kp	K
28/11/2023	10:06	9	STM 400	ORA1	215	800	15	15	20	1
28/11/2023	10:21	12	STM 400	ROSE	200	800	6	15	20	1
28/11/2023	11:54	14	STM 400	PUR8	215	800	15	15	20	1
28/11/2023	10:15	11	STM 400	EVA	155	800	3	10	20	1
28/11/2023	09:40	8	STM 400	ORA1	215	800	15	15	20	1
28/11/2023	10:11	10	STM 400	ORA1	215	800	15	15	20	1
28/11/2023	10:29	11	STM 400	ORA1	215	800	15	15	20	1
28/11/2023	18:03	79	STM 500	ORA1	215	800	15	15	20	1
28/11/2023	10:32	75	STM 500	ORA1	215	800	15	15	20	1
28/11/2023	15:47	78	STM 500	ORA1	215	800	15	15	20	1
28/11/2023	12:39	77	STM 500	ORA1	215	800	15	15	20	1
28/11/2023	12:09	76	STM 500	ORA1	215	800	15	15	20	1
28/11/2023	09:53	73	STM 500	ORA1	215	800	15	15	20	1
28/11/2023	10:21	74	STM 500	ORA1	215	800	15	15	20	1
28/11/2023	09:50	72	STM 500	ORA1	215	800	15	15	20	1
28/11/2023	09:01	69	STM 500	ORA1	215	800	15	15	20	1

Need more information?



Contact the sales department: +33 (0)4 74 00 59 54